



Theory Paper Grade 5 Sample Y July 2017

Duration 2 hours

Candidates with labels: fix name label here.
All other candidates: write names in full.

Candidate

Entered by

TOTAL MARKS
100

This paper contains SEVEN questions, ALL of which should be answered.

Write your answers on this paper - no others will be accepted.

Answers must be written clearly and neatly - otherwise marks may be lost.

- 1 (a) The following extract, which begins on the first beat of the bar, contains some changes of time signature. Put in the correct time signature at each of the three places marked *.

15

A musical extract on a single treble clef staff. It begins with a treble clef and a key signature of one sharp (F#). The extract consists of four measures. The first measure has a time signature of 3/4 and contains a quarter note G4, a quarter rest, a quarter note B4, and a quarter note D5. The second measure has a time signature of 6/8 and contains a dotted quarter note G4, an eighth note B4, a dotted quarter note D5, and an eighth note F#5. The third measure has a time signature of 3/4 and contains a quarter note G4, a quarter note B4, and a quarter note D5. The fourth measure has a time signature of 4/4 and contains a quarter note G4, a quarter note B4, a quarter note D5, and a quarter note F#5. There are three asterisks (*) above the first, second, and third measures. A '3' is written below the first measure, and a '4' is written below the fourth measure. The text 'etc.' is to the right of the staff, and '(6)' is at the bottom right.

- (b) Look at the following extract and then answer the questions below.

Andante un poco allegretto

Benda, Sonatina in G minor

A musical extract for piano in G minor, 6/8 time. It consists of four measures. The first measure is marked '1' and contains a chord labeled 'A' (F4, G4, A4). The second measure is marked '2' and contains a chord (F4, G4, A4, B4). The third measure is marked '3' and contains a chord labeled 'B' (F4, G4, A4, B4, C5). The fourth measure is marked '4' and contains a chord (F4, G4, A4, B4). The text 'etc.' is to the right of the staff.

- (i) Draw a circle around *three successive notes* that form part of a chromatic scale. (2)
- (ii) Describe the chords marked **A** and **B** as **I, II, IV** or **V**. Also indicate whether the lowest note of the chord is the root (a), 3rd (b) or 5th (c). The key is G minor.

Chord **A** (bar 1) (2)

Chord **B** (bar 3) (2)

- (iii) Rewrite the last left-hand note of the extract so that it sounds at the same pitch, but using the alto C clef. Remember to put in the clef and the key signature.

A blank musical staff with five lines, intended for the student to write the note in the alto C clef.

(3)

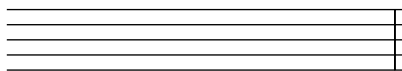
4 Look at this extract from a piece for bassoon and piano by Michael Rose, and then answer the questions that follow.

Alla marcia ♩ = 100

© 1990 by The Associated Board of the Royal Schools of Music

- (a) (i) **Mark clearly on the music**, using the appropriate capital letter for identification, one example of each of the following. Also give the bar number of each of your answers, as shown in the answer to **A**. 10
- A** in the bassoon part, a subdominant note in the key of C major (circle the note concerned). Bar ...2....
- B** in the bassoon part, a melodic interval of a diminished 5th (circle the notes concerned). Bar (2)
- C** in the bassoon part, a sign that means to give slight emphasis to a note. Bar (2)
- D** in the piano part, a chord of C minor in first inversion. Bar (2)
- (ii) Name one similarity and one difference *in the bassoon part* between bars 5 and 6.
- Similarity (1)
- Difference (1)

- (iii) Rewrite the last bassoon note of the extract so that it sounds at the same pitch, but using the tenor C clef. Remember to put in the clef sign.



(2)

- (b) (i) Tick one box for each term/sign.

10

Alla marcia means:

$\text{♩} = 100$ means:

majestic

100 crotchet beats

broadening

100 crotchet beats in a minute

in the style of a march

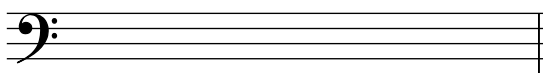
100 crotchet notes

in the same way

100 crotchets in the melody

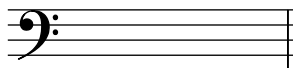
(4)

- (ii) Rewrite the bassoon part of bar 4 in compound time but without changing the rhythmic effect. Remember to put in the new time signature.



(4)

- (iii) Write as a breve (double whole-note) an enharmonic equivalent of the first bassoon note of the extract.



(2)

- (c) (i) Answer TRUE or FALSE to each of the following statements:

10

The bassoon is a double-reed instrument.

(2)

The bassoon is a transposing instrument.

(2)

A bassoonist might be asked to play pizzicato.

(2)

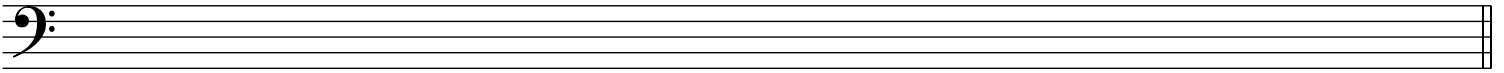
- (ii) The bassoon is a member of the woodwind family of orchestral instruments. Name a standard orchestral instrument from a *different* family that could play the bassoon part of the extract so that it sounds at the same pitch, and state the family of instruments to which it belongs.

Instrument Family

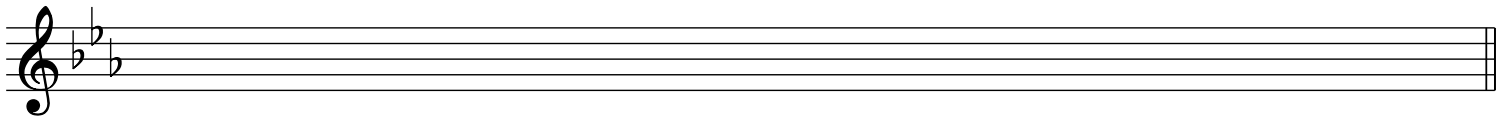
(4)

- 5 (a) Write the key signature of five sharps and then one octave **descending** of the major scale with that key signature. Use semibreves (whole notes) and begin on the tonic.

10



- (b) Using semibreves (whole notes), write one octave **ascending** of the **melodic** minor scale that has the given key signature. Begin on the tonic and remember to put in any necessary additional accidentals.



6 Look at this extract and then answer the questions below.

Allegretto

(a) Tick one box for each term.

leggiero means:

- light
- graceful
- loving
- smoothly

teneramente means:

- pleasant
- tenderly
- sad, mournful
- bold, strong

smorzando means:

- resonant, with rich tone
- calm
- hurrying
- dying away

(6)

(b) Give the technical names (e.g. tonic, dominant) of each of the notes marked **X** and **Y**.
The key is A major.

X (bar 1) (2)

Y (bar 2) (2)

(c) Rewrite bar 3 in notes of *twice the value*. Remember to include the new time signature.

(4)

(d) Give the letter name of the *highest* note in the melody. (1)

7 Indicate suitable progressions for two cadences in the following melody by writing I, II, IV or V in the boxes underneath the staff. Use **one** chord per box.

10

□ □

□ □ □ □ □ □